

**PML**

Plymouth Marine  
Laboratory

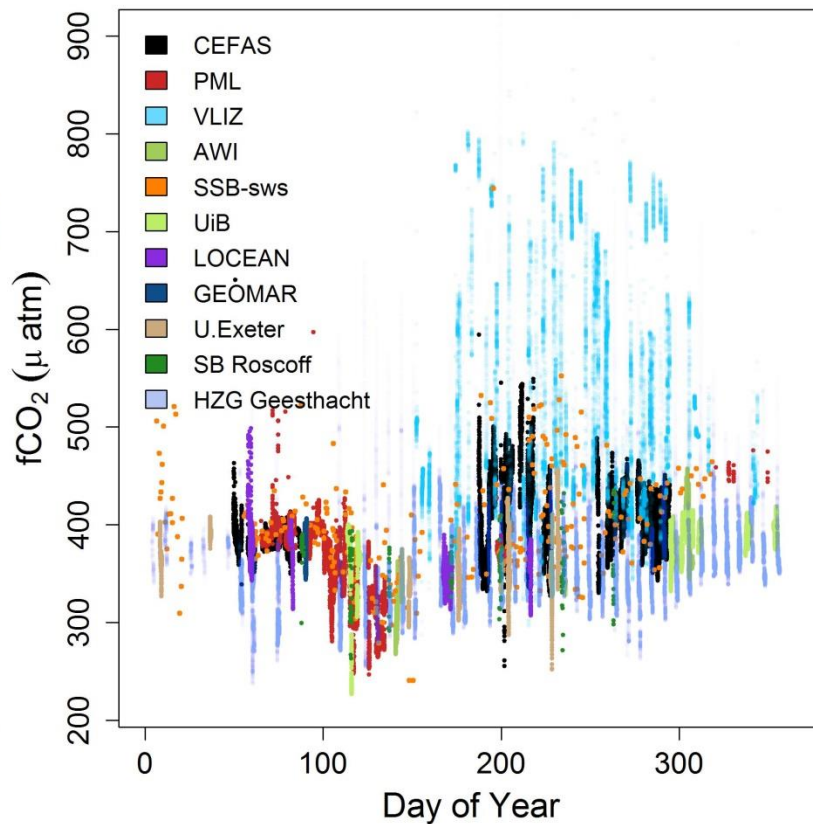
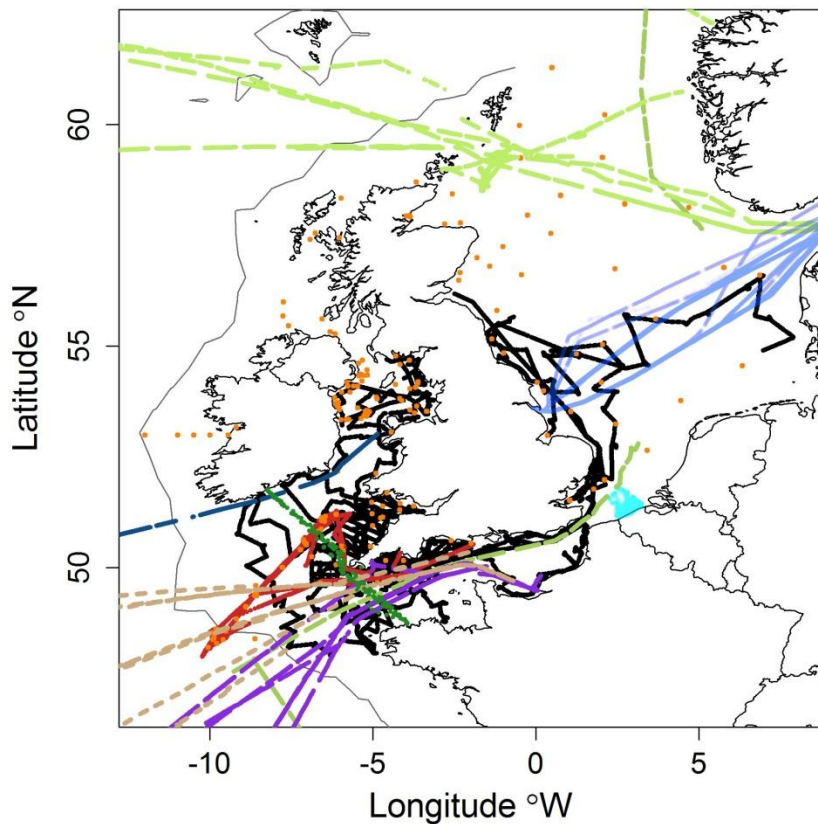
Listen to the ocean

# Shelf Seas Biogeochemistry

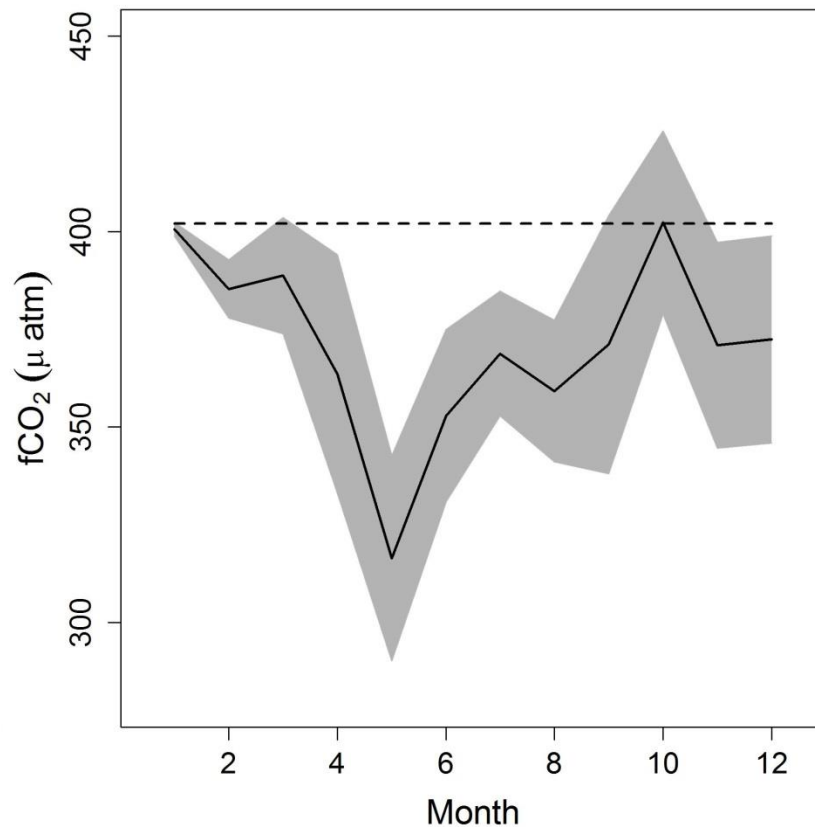
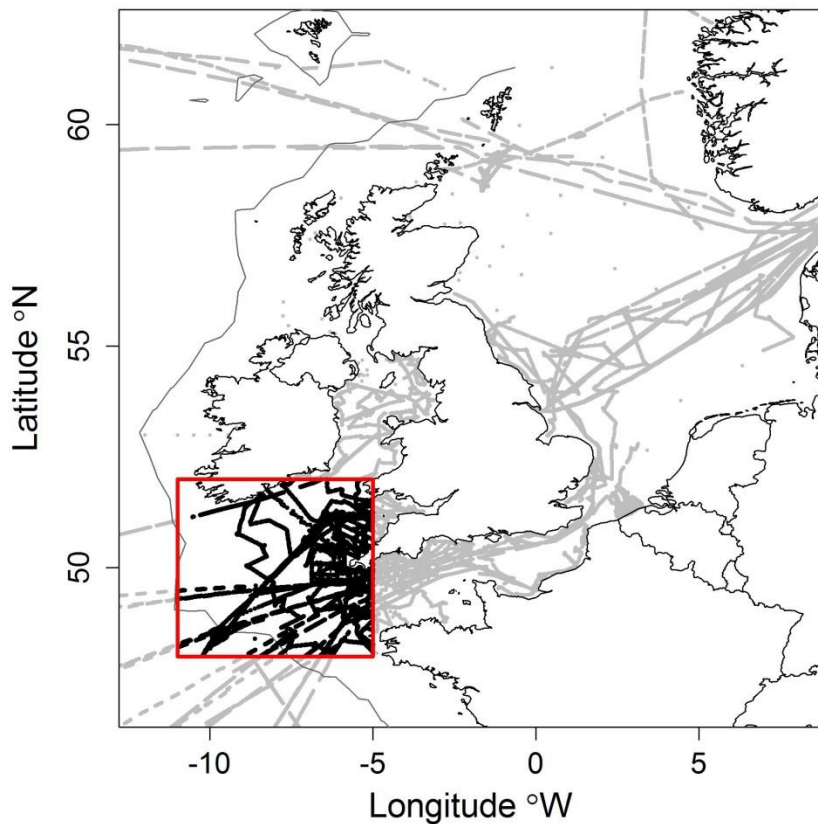
## Air-Sea CO<sub>2</sub> flux 2015

Vassilis Kitidis ([vak@pml.ac.uk](mailto:vak@pml.ac.uk)), Shutler, Ashton, Warren, Brown, Findlay, Hartman, Humphreys, Kivimäe, Greenwood, Hull, McGrath, Stewart, Walsham, McGovern, Bozec, Gac, vanHeuven, Hoppema, Schuster, Johannessen, Omar, Lauvset, Skjelvan, Olsen, Steinhoff, Körtzinger, Becker, Lefevre, Gkritzalis, Catrijsee, Petersen, Voynova, Nightingale

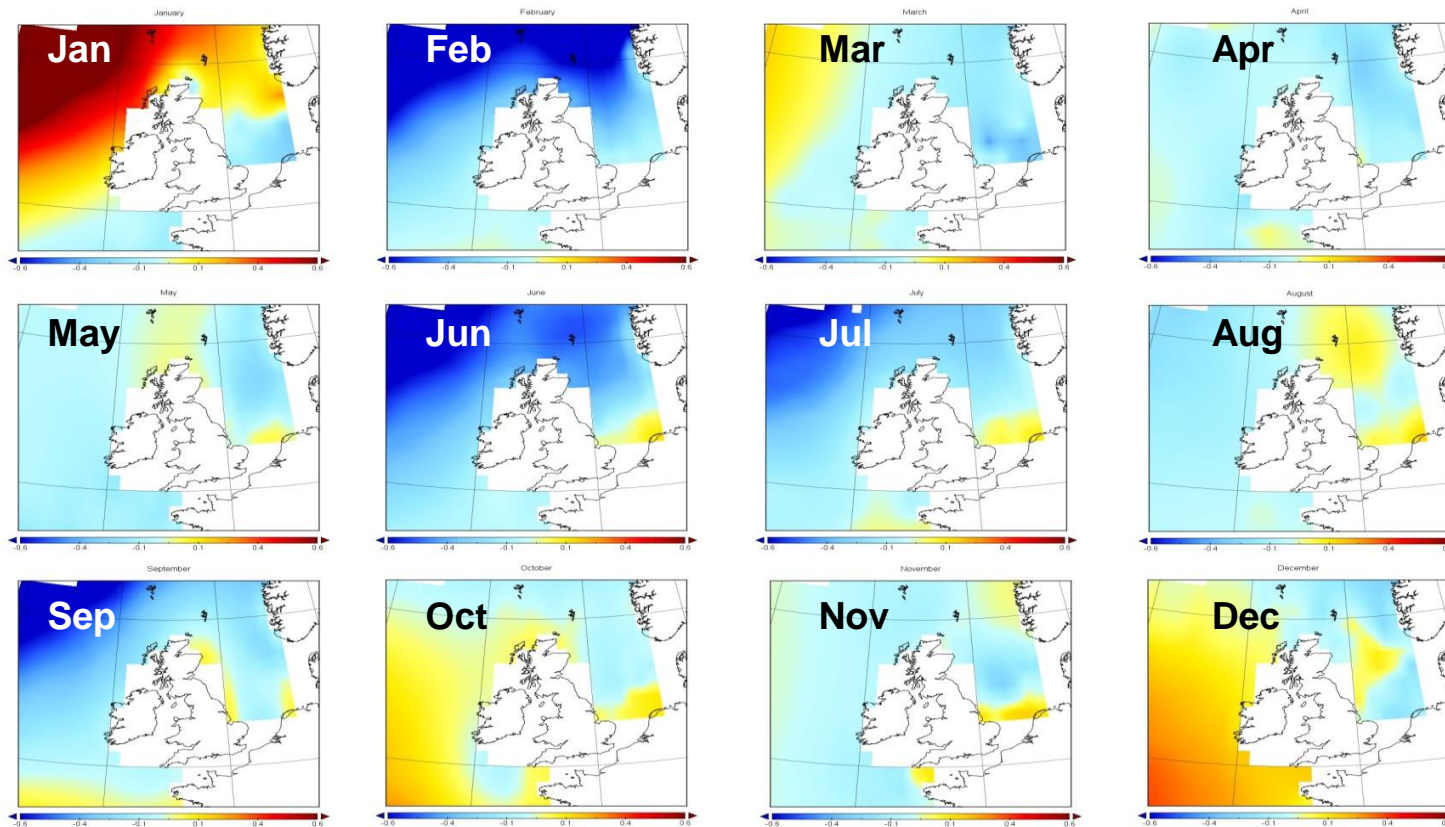
## fCO<sub>2</sub> – CANDYFLOSS & partners



## fCO<sub>2</sub> – Celtic Sea observations [ ⚠ variable intake depth ]



# Monthly air-sea CO<sub>2</sub> flux – Flux Engine [1° × 1°; common depth]



## 2015 NW European shelf CO<sub>2</sub> uptake: 27-35 Tg C

