

Geochemical Investigation of a Digitally Imaged Shelf Core, and Implications for Interpretation of Sediment Colour

Statham P J^a, et al.

- SPI (Sediment profile imagery) now commonly used tool in biological studies and environmental quality investigations.
- However geochemical interpretation of the tens of thousands of images taken very limited
- Potential to gain much more information on sediments if images can be calibrated and related to geochemistry

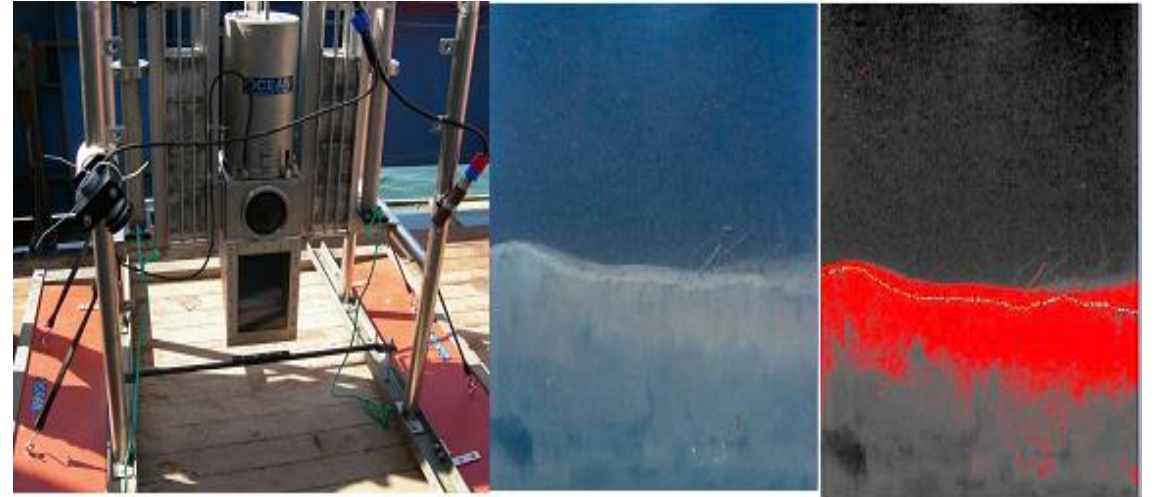


Image from Cefas/Mart Solan

- Here taken core in modified core tube so that can both image the sediment and geochemically analyze the core
- Extensive geochemical analyses provides insights into use of SPI for redox state and oxygen penetration of sediments and Apparent Redox Potential Discontinuity
- Additional uses of data discussed on poster- come and have a read and chat!

